

Katayama Acoustic Chamber AC1



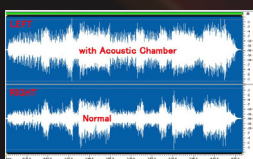
Unsere VGS-Gitarren der Rose- und Belle-Rose-Serie sind mit einer klangverbessernden Katayama Acoustic Chamber ausgestattet. Diese verleiht dem Instrument...

- ...einen „erwachsenen“, eingespielten Sound.
- ...einen runden, singenden Klangcharakter.
- ...eine ausgewogene Frequenzanhebung vor allem im Bass- und Mittenbereich.
- ...eine klare und schnelle Klangausbreitung.
- ...einen seidigen natürlichen Hall.
- ...längeres Sustain und konstanteres Abklingen.
- ...einen weiteren Klangabstrahlwinkel.

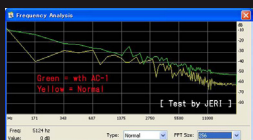
Katayama Acoustic Chamber AC1
Japan Patent Pending No.2009-15839
China Patent Pending No.201080027787.0

Die Wirkungsweise im Detail

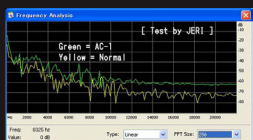
In den einzelnen Grafiken erkennt man die detaillierten Unterschiede, die durch die Katayama Acoustic Chamber erzeugt werden.



Sound waveform Graph



Frequency Analysis Graph



Frequency Analysis Graph

Played guitar song „Sakura no Shirase“ on same pattern
Horizontal direction = Time Ruler (Unit = MM:SS) /
Vertical direction = Amplitude Ruler (Unit = dB / -90 to 0 dB)

Played guitar song „Sakura no Shirase“ on same pattern
Green = with AC-1 / Yellow = without AC (normal)
Horizontal direction = Frequency Ruler (Unit = Hz)
Vertical direction = Amplitude Ruler (Unit = dB)
Graph type = Normal

Played guitar song „Sakura no Shirase“ on same pattern
Green = with AC-1 / Yellow = without AC (Normal)
Horizontal direction = Frequency Ruler (Unit = Hz)
Vertical direction = Amplitude Ruler (Unit = dB)
Graph type = Linear

Quelle: facebook, Jeri Fan Page

Der Erfinder



Der japanische Gitarrenspezialist Ichiro Katayama greift auf über 35 Jahre Erfahrung in der Konstruktion und im Bau hochwertiger Musikinstrumente zurück. Er ist ein Pionier in der Entwicklung elektro-akustischer Abnahmesysteme. Für einen großen, etablierten Hersteller war er in R&D, Produktion sowie diversen Leitungspositionen tätig. Auf der Suche nach dem besseren Sound beschreitet er seit 2008 mit seinem eigenen Unternehmen neue Pfade der Klangforschung und des innovativen Instrumentenbaus.

Katayama Acoustic Chamber AC1



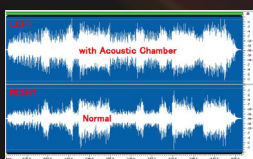
Our Rose- and Belle-Rose-Series VGS-Guitars are equipped with a sound-enhancing Katayama Acoustic Chamber. This provides...

- ...mature sound, like a guitar that has been played for many years.
- ...mild and mellow character.
- ...balanced frequency accentuation, especially in bass and mid range frequencies.
- ...clear and fast sound projection.
- ...silky natural reverb.
- ...longer sustain and constant level of decay
- ...widespread sound projection.

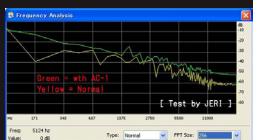
Katayama Acoustic Chamber AC1
Japan Patent Pending No.2009-15839
China Patent Pending No.201080027787.0

Detailed Functioning

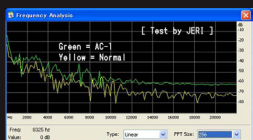
The graphs show the explicit difference caused by the Katayama Acoustic Chamber.



Sound waveform Graph



Frequency Analysis Graph



Frequency Analysis Graph

Played guitar song "Sakura no Shirase" on same pattern
Horizontal direction = Time Ruler (Unit = MM:SS) /
Vertical direction = Amplitude Ruler (Unit = dB / -90 to 0 dB)

Played guitar song "Sakura no Shirase" on same pattern
Green = with AC-1 / Yellow = without AC (normal)
Horizontal direction = Frequency Ruler (Unit = Hz)
Vertical direction = Amplitude Ruler (Unit = dB)
Graph type = Normal

Played guitar song "Sakura no Shirase" on same pattern
Green = with AC-1 / Yellow = without AC (Normal)
Horizontal direction = Frequency Ruler (Unit = Hz)
Vertical direction = Amplitude Ruler (Unit = dB)
Graph type = Linear

Source: facebook, Jeri Fan Page

The Inventor



Guitar expert Chiro Katayama from Japan looks back on more than 35 years of experience in constructing and building musical instruments.

He pioneered the development of pickup systems for electro-acoustic guitars and acted in different departments of a well-known manufacturer, including R&D, production and diverse leading positions.

On his journey to a better sound he set sail with his own company in 2008.